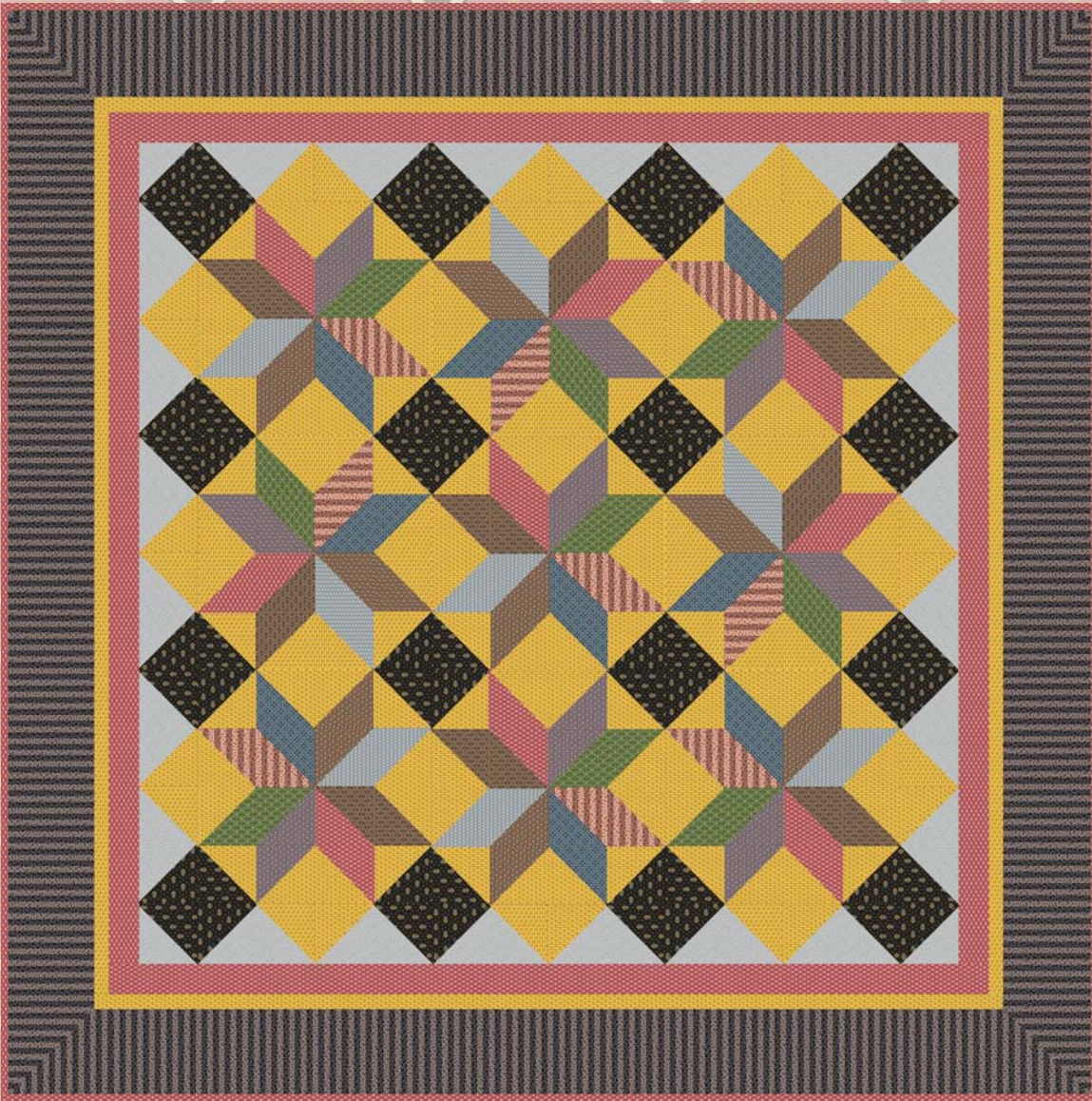


IQSC Hampton Quilt



Finished size: 74½" x 74½"

Introducing
Andover Fabrics new collection:

IQSC Hampton

Fabrics by Kathy Hall with Jo Morton for
the International Quilt Study Center

Quilt designed by Jean Ann Wright



makower uk®

1384 Broadway · New York, NY 10018 · (800) 223-5678

www.andoverfabrics.com

IQSC Hampton Quilt

*Introducing Andover Fabrics new collection: IQSC Hampton
Fabrics by Kathy Hall with Jo Morton for the International Quilt Study Center
Quilt designed and made by Jean Ann Wright*

Fabric Requirements and Cutting Directions

Note: A fat ¼th is an 18" x 20"-22" cut.

Mitered outer borders include 2" extra length for matching stripes.

Other borders are exact length needed plus seam allowances.

4127-K 5/8 yard **Brown with Tan Diamonds Print (blocks, pieced border)**

Cut (32) 4 7/8" squares cut in half diagonally to make 64 half-square triangles

4128-B fat ¼ yard **Lt. Blue with White Circles Print (star points)**

Cut (9) 4 7/8" squares cut in half diagonally to make 18 half-square triangles

4129-G fat ¼ yard **Green Circles Print (star points)**

Cut (9) 4 7/8" squares cut in half diagonally to make 18 half-square triangles

4129-N fat ¼ yard **Brown with Pink Circles Print (star points)**

Cut (9) 4 7/8" squares cut in half diagonally to make 18 half-square triangles

4130-B 5/8 yard **Lt. Blue Floral Print (pieced border)**

Cut (26) 4 7/8" squares cut in half diagonally to make 52 half-square triangles

4131-N fat ¼ yard **Brown with White Leaves Print (star points)**

Cut (9) 4 7/8" squares cut in half diagonally to make 18 half-square triangles

4131-P fat ¼ yard **Purple with White Leaves Print (star points)**

Cut (9) 4 7/8" squares cut in half diagonally to make 18 half-square triangles

4132-E fat ¼ yard **Brown/Pink Stripe (star points)**

Cut (9) 4 7/8" squares cut in half diagonally to make 18 half-square triangles

4132-P 1 5/8 yards **Purple/Brown/Cream Stripe (outer border)**

Cut (4) 6 1/2" x 76 1/2" strips, pieced from 8 width of fabric strips

4134-B fat ¼ yard **Blue Squares & Crosses Print (star points)**

Cut (9) 4 7/8" squares cut in half diagonally to make 18 half-square triangles

4135-R *3/4 yard **Red with White Leaves Print (star points, inner border)**

Cut (2) 2 1/2" x 60 1/2" strips, pieced from 3 width of fabric strips

Cut (2) 2 1/2" x 56 1/2" strips, pieced from 3 width of fabric strips

Cut (9) 4 7/8" squares cut in half diagonally to make 18 half-square triangles

4135-Y 1 3/4 yards **Yellow with Red Leaves Print (blocks, pieced border, middle border)**

Cut (2) 1 1/2" x 62 1/2" strips, pieced from 4 width of fabric strips

Cut (2) 1 1/2" x 60 1/2" strips, pieced from 3 width of fabric strips

Cut (66) 4 7/8" squares cut in half diagonally to make 132 half-square triangles

**Additional fabric required for binding.*

4134-N 5 yards **Brown Squares & Crosses Print (backing)**

Cut and piece to fit quilt top with 4" overlap on all sides.

4135-R *5/8 yard **Red with White Leaves Print (binding)**

Cut (8) 2 1/2" x width of fabric strips

Quilt finishes 74 1/2" x 74 1/2"

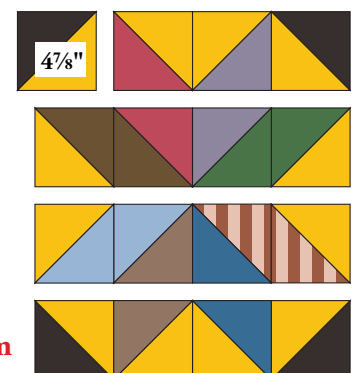
9 Pieced Blocks: 16" x 16"

Planning

Reproduction fabrics from the Hampton collection make this classic quilt that is just the right size for a wall quilt or bed topper. Simple piecing with 4" triangles makes the quilt suitable for a beginning quilter. To prevent stretching the bias edges, you may want to use spray starch on the back side of the fabrics before cutting the triangles.

Making and Assembling the Quilt

1. Each block requires the following: 2 half-square triangles of each of the "star points" fabrics, 4 dark brown triangles, and 12 yellow triangles. Referring to the Block Diagram for correct color combinations, join half-square triangles in pairs to make squares. Join the pieced squares in 4 rows of 4 squares each. Join the rows to make a block. Make 9 blocks all alike.
2. Arrange the 9 blocks to your satisfaction, turning them a quarter or half turn so that each star is in a different orientation. Join blocks in 3 rows of 3 blocks each. Join the rows.

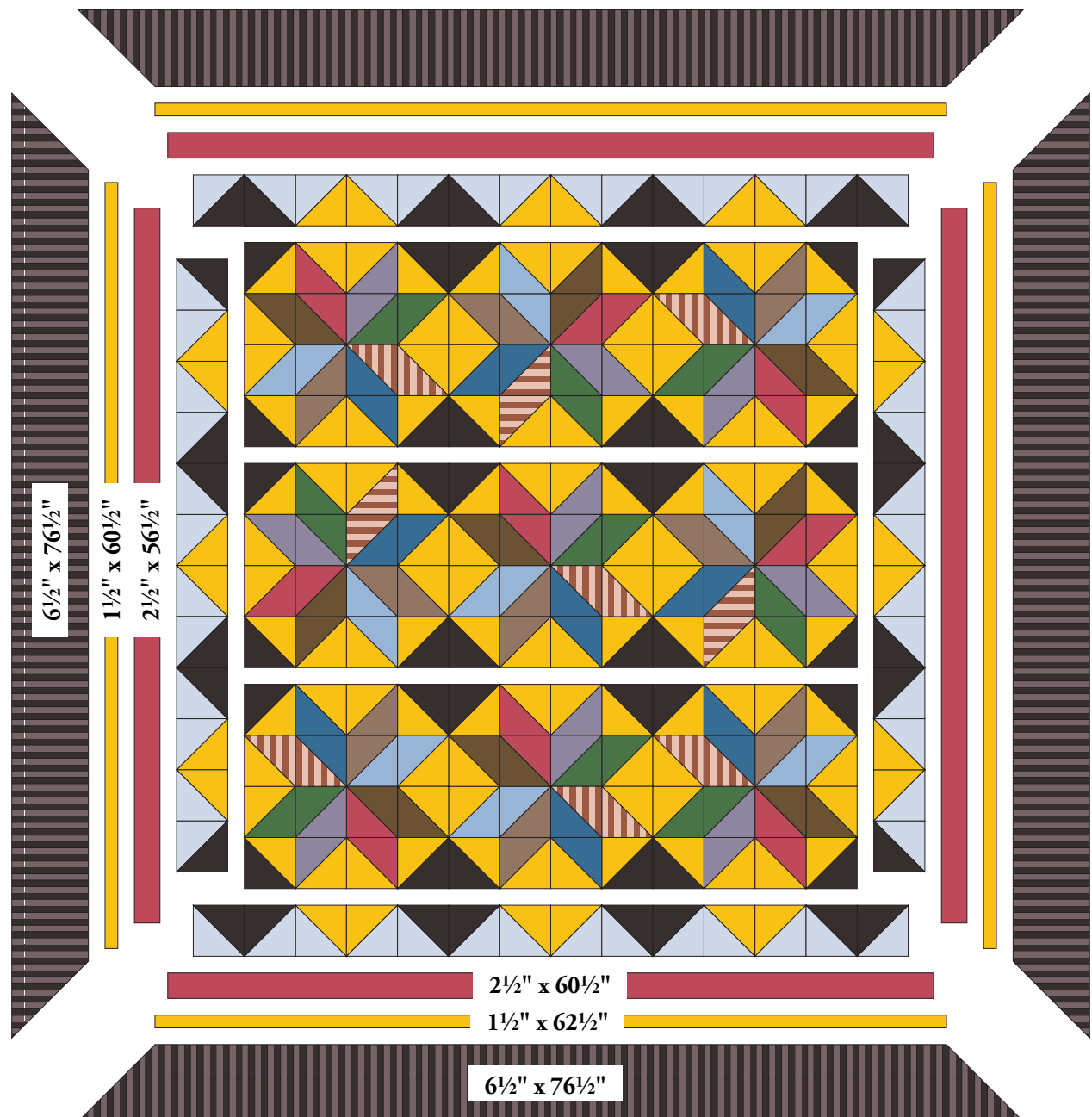


IQSC Hampton Quilt

- For pieced borders, join dark brown, light blue, and yellow half-square triangles in pairs to make 28 dark brown/light blue squares and 24 light blue/yellow squares.
- Refer to the Quilt Diagram throughout the assembly. Sew 12 squares from step 3 to make a side border, being careful to sew in the order shown. Sew to side of quilt, noting orientation of patches. Repeat for opposite side. Sew 14 squares to make top border. Sew to quilt. Repeat for bottom border.
- Sew shorter red border strips to sides of quilt. Sew longer red borders to top and bottom. Sew yellow borders to quilt in same order.
- Join 2 striped outer border strips to make a long border, matching stripes at seam joining. Center and sew the border to the quilt, starting and stopping stitching $\frac{1}{4}$ " from the quilt's edge. Repeat on all 4 sides. Miter the corners and trim away excess fabrics.

Finishing the Quilt

- Layer quilt with batting and backing. Quilt in the ditch around borders and block patches. Quilt motifs of your choice in the triangle patches. Bind with red print to finish the quilt.



Quilt Diagram

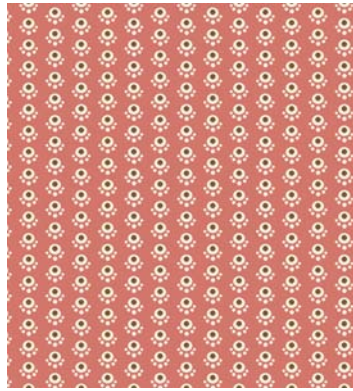
1384 Broadway
New York, NY 10018
(800) 223-5678
www.andoverfabrics.com

IQSC Hampton

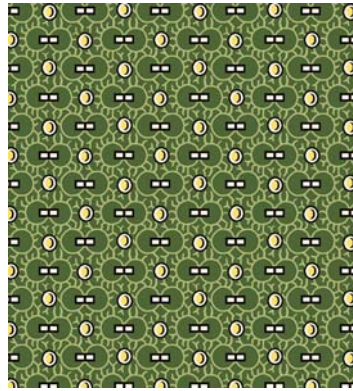
International Quilt Study Center



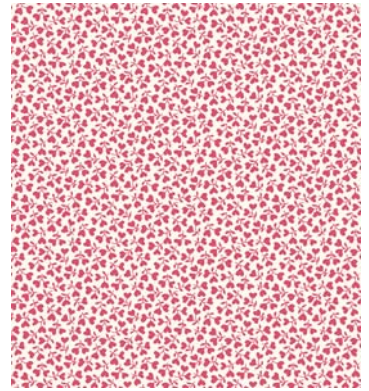
4127-E



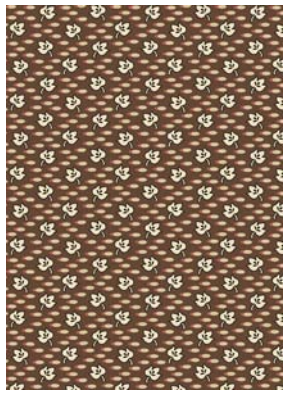
4128-E



4129-G*



4130-R



4131-N*



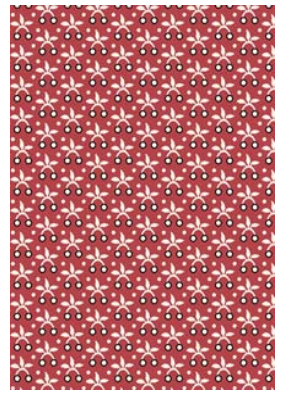
4132-E*



4133-E



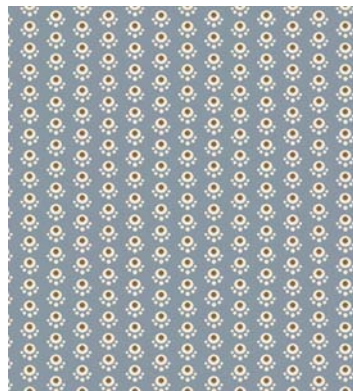
4134-N*



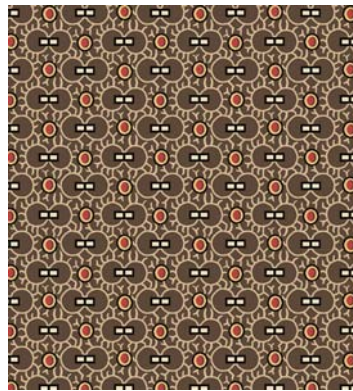
4135-R*



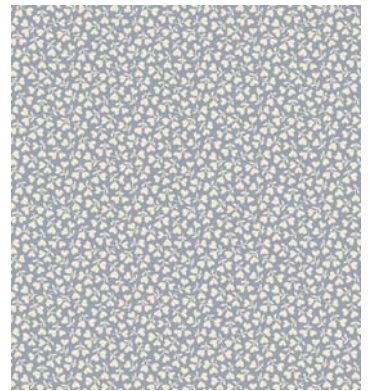
4127-K*



4128-B*



4129-N*



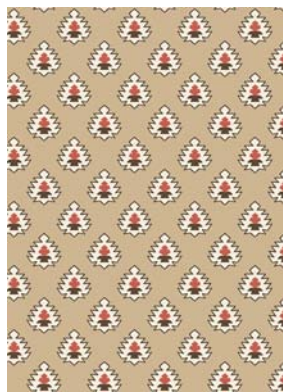
4130-B*



4131-P*



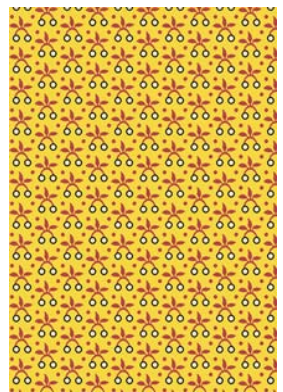
4132-P*



4133-N



4134-B*



4135-Y*

*Indicates fabric used in quilt pattern. Fabrics shown are 50% of actual size.

Free Pattern Download Available at www.andoverfabrics.com